

# Clinical Characteristics and Viral RNA Detection in Children With Coronavirus Disease 2019 in the Republic of Korea

Mi Seon Han, MD, PhD; Eun Hwa Choi, MD, PhD; Sung Hee Chang, MD; Byoung-Lo Jin, MD; Eun Joo Lee, MD; Baek Nam Kim, MD; Min Kyoung Kim, MD; Kihyun Doo, MD; Ju-Hee Seo, MD, PhD; Yae-Jean Kim, MD, PhD; Yeo Jin Kim, MD; Ji Young Park, MD, PhD; Sun Bok Suh, MD, PhD; Hyunju Lee, MD, PhD; Eun Young Cho, MD; Dong Hyun Kim, MD; Jong Min Kim, MD; Hye Young Kim, MD, PhD; Su Eun Park, MD, PhD; Joon Kee Lee, MD, PhD; Dae Sun Jo, MD, PhD; Seung-Man Cho, MD; Jae Hong Choi, MD; Kyo Jin Jo, MD; Young June Choe, MD, PhD; Ki Hwan Kim, MD; Jong-Hyun Kim, MD, PhD

**IMPORTANCE** There is limited information describing the full spectrum of coronavirus disease 2019 (COVID-19) and the duration of severe acute respiratory syndrome coronavirus 2 (SARS-CoV-2) RNA detection in children.

**OBJECTIVE** To analyze the full clinical course and the duration of SARS-CoV-2 RNA detectability in children confirmed with COVID-19 in the Republic of Korea, where rigorous public health interventions have been implemented.

**DESIGN, SETTING, AND PARTICIPANTS** This case series of children with COVID-19 was conducted in 20 hospitals and 2 nonhospital isolation facilities across the country from February 18, 2020, to March 31, 2020. Children younger than 19 years who had COVID-19 were included.

**EXPOSURES** Confirmed COVID-19, detected via SARS-CoV-2 RNA in a combined nasopharyngeal and oropharyngeal swab or sputum by real-time reverse transcription-polymerase chain reaction.

**MAIN OUTCOMES AND MEASURES** Clinical manifestations during the observation period, including the time and duration of symptom occurrence. The duration of SARS-CoV-2 RNA detection was also analyzed.

**RESULTS** A total of 91 children with COVID-19 were included (median [range] age, 11 [0-18] years; 53 boys [58%]). Twenty children (22%) were asymptomatic during the entire observation period. Among 71 symptomatic cases, 47 children (66%) had unrecognized symptoms before diagnosis, 18 (25%) developed symptoms after diagnosis, and only 6 (9%) were diagnosed at the time of symptom onset. Twenty-two children (24%) had lower respiratory tract infections. The mean (SD) duration of the presence of SARS-CoV-2 RNA in upper respiratory samples was 17.6 (6.7) days. Virus RNA was detected for a mean (SD) of 14.1 (7.7) days in asymptomatic individuals. There was no difference in the duration of virus RNA detection between children with upper respiratory tract infections and lower respiratory tract infections (mean [SD], 18.7 [5.8] days vs 19.9 [5.6] days;  $P = .54$ ). Fourteen children (15%) were treated with lopinavir-ritonavir and/or hydroxychloroquine. All recovered, without any fatal cases.

**CONCLUSIONS AND RELEVANCE** In this case series study, inapparent infections in children may have been associated with silent COVID-19 transmission in the community. Heightened surveillance using laboratory screening will allow detection in children with unrecognized SARS-CoV-2 infection.

JAMA Pediatr. doi:10.1001/jamapediatrics.2020.3988  
Published online August 28, 2020.

[+ Editorial](#)

[+ Supplemental content](#)

**Author Affiliations:** Author affiliations are listed at the end of this article.

**Corresponding Authors:** Jong-Hyun Kim, MD, PhD, Department of Pediatrics, St Vincent's Hospital, The Catholic University of Korea, 93 Jungbu-daero, Paldal-gu, Suwon-si, Gyeonggi-do, Korea, 16247 (jh00mn@catholic.ac.kr); Eun Hwa Choi, MD, PhD, Department of Pediatrics, Seoul National University College of Medicine, 101 Daehak-ro, Jongno-gu, Seoul, Korea, 03080 (eunchoi@snu.ac.kr).

Coronavirus disease 2019 (COVID-19) caused by severe acute respiratory syndrome coronavirus 2 (SARS-CoV-2) has spread to many countries, resulting in a global public health threat. The World Health Organization characterized COVID-19 as a pandemic on March 11, 2020, and as of April 20, 2 314 621 confirmed cases and 157 847 fatal cases have been reported.<sup>1</sup>

The Republic of Korea was one of the earliest countries struck by the COVID-19 outbreak, with the first imported case from China on January 20, 2020, and a sudden surge in COVID-19 cases associated with a religious group in the city of Daegu.<sup>2,3</sup> As an effort to contain COVID-19 during this early outbreak with the largest case numbers after China, the Korea Centers for Disease Control and Prevention and local health departments used rigorous public health interventions, including prompt epidemiologic investigations, contact tracing followed by quarantine measures, and large-scale testing of all contacts, irrespective of symptom severity.<sup>4</sup> Patients who were severely ill with COVID-19 were immediately hospitalized in designated hospitals. Patients with mild and asymptomatic cases were also put in isolation at city or provincial medical centers or community facilities called *living treatment centers*. This setting of strict quarantine and isolation of any contacts or confirmed cases provides a unique opportunity to understand the whole course of COVID-19 in children in detail.

As of April 20, 2020, a total of 10 674 cases have been confirmed, with 236 deaths in Korea.<sup>5</sup> Among them were 718 children younger than 19 years (6.7% of total cases), and no child deaths have been reported to date since the first reported pediatric case.<sup>6</sup> Recent reports on pediatric cases of COVID-19 suggest that children usually have mild illnesses.<sup>7-9</sup> However, the full spectrum of illness in children is not clearly understood because many pediatric patients might not have been subject to viral testing. Furthermore, there is limited information regarding the duration of SARS-CoV-2 RNA detection in children's respiratory tracts.<sup>10</sup> This study aimed to analyze the clinical course and duration of SARS-CoV-2 RNA detection in children with COVID-19 in the setting of rigorous public health interventions.

## Methods

### Study Population

This study included children younger than 19 years who had confirmed COVID-19 in Korea from February 18 to March 31, 2020. Children were tested for COVID-19 when they had a history of close contact with confirmed cases, were epidemiologically linked to COVID-19 outbreaks, arrived from abroad, or had symptoms suspicious of COVID-19 as judged by physicians.<sup>11</sup> All children with confirmed COVID-19 were placed in isolation at 20 hospitals and 2 nonhospital isolation facilities across the country. Cases linked to a specific religious group in Daegu were excluded, given limited clinical information. Cases of COVID-19 were diagnosed by detecting SARS-CoV-2 RNA in a combined nasopharyngeal and oropharyngeal swab or sputum by real-time reverse transcription-polymerase chain

### Key Points

**Question** How long is severe acute respiratory syndrome coronavirus 2 (SARS-CoV-2) RNA detected in children, and are children with coronavirus disease 2019 (COVID-19) identifiable by symptoms?

**Findings** In this case series of 91 children with COVID-19 in Korea, 22.0% were asymptomatic. Only 8.5% of symptomatic cases were diagnosed at the time of symptom onset, while 66.2% had unrecognized symptoms before diagnosis and 25.4% developed symptoms after diagnosis; SARS-CoV-2 RNA was detected for a mean of 17.6 days overall and 14.1 days in asymptomatic cases.

**Meaning** Symptom screening fails to identify most COVID-19 cases in children, and SARS-CoV-2 RNA in children is detected for an unexpectedly long time.

reaction (RT-PCR). The RT-PCR tests were performed at the Research Institute of Public Health and Environment of the city or provincial governments, delegate agencies, or hospitals, using COVID-19 test kits (Kogene Biotech, Seegene, and Biosewoom) approved by the Ministry of Food and Drug Safety. (Details of SARS-CoV-2 RT-PCR are provided in the eMethods in the Supplement.) The turnaround time of the tests was within 24 hours, and most were done within 6 to 12 hours. This study was approved by the institutional review board at each health care facility, except for 5 newly established isolation facilities, where an institutional review board is not operating. Informed consent was waived because the study involved no more than minimal risk to participants and could not be conducted without the waiver. The investigation was part of the public health response by the local health departments and was not subject to institutional review board approval.

### Data Collection

An electronic case report form was constructed, and physicians were asked to fill out the form. Physicians collected clinical data and viral test results of the patients and entered the data into each electronic case report form. Clinical data included age, sex, underlying disease, date of diagnosis, route of exposure, symptoms, laboratory test results, radiographic findings, treatment, and outcome. The route of exposure was based on the epidemiologic report by the local government using a standardized survey.

### Definitions

The date of confirmed diagnosis was defined as the date when an initial respiratory sample with a positive test result was collected. Health care isolation was lifted when patients had improvement in symptoms and 2 consecutive negative PCR results from nasopharyngeal and oropharyngeal swab specimens collected at least 24 hours apart. The date to discontinue isolation was defined as the date the second negative sample was collected. The duration of viral RNA detection was defined as the interval from the date of symptom onset to the date the first sample negative by PCR was collected. In asymptomatic individuals, the interval from the date of diagnosis was applied.

### Case Classifications

Patients were classified based on symptoms, signs, and findings of chest imaging. Children who did not develop any symptoms during the observation period were defined as asymptomatic. Children with fever (including mild fever) or respiratory symptoms with no infiltration on chest radiographs or chest computed tomography were defined as having upper respiratory tract infections (URTIs). Lower respiratory tract infection (LRTI) was defined by the presence of fever (including mild fever) or respiratory symptoms and any infiltrates on chest imaging. Patients were also categorized based on the severity of the disease. Mild cases were defined as the presence of any symptoms without abnormal chest imaging, while moderate cases were defined as the presence of LRTI. When a child with hypoxia had an oxygen saturation of less than 95%, required oxygen supplementation, or received mechanical ventilation, the patient was defined as having a severe case.

### Time and Duration of Symptom Occurrence

Patients who had any symptoms were categorized as those who had symptoms before diagnosis, those who developed symptoms at the time of diagnosis, and those who had been asymptomatic at diagnosis but later developed symptoms, based on the time between symptom onset and the time of diagnosis. The interval between the dates of symptom onset and diagnosis and the total duration of symptoms were determined for each group.

### Statistical Analysis

Percentages of clinical features were calculated from the number of patients with known information for that feature. The difference between normally distributed continuous variables was analyzed by the 2-sample *t* test, whereas nonnormally distributed variables were compared using the Mann-Whitney *U* test. Categorical variables were compared using the Pearson  $\chi^2$  test or the Fisher exact test. The proportion of children in isolation over time by different symptomatic groups was compared by Kaplan-Meier survival analysis. The differences were statistically significant when the 2-sided *P* value was less than .05. The software program SPSS, version 26.0 (IBM) was used for statistical analysis.

## Results

### Epidemiology of COVID-19 in Children

This study included 91 patients, accounting for 76.5% of all 119 children younger than 19 years in Korea whose cases were not connected to the outbreak of a specific religious group in Daegu, as reported by the Korea Centers for Disease Control and Prevention, and confirmed with COVID-19 from February 18 to March 31, 2020 (eFigure 1 in the Supplement). Nine patients' information has been previously reported.<sup>5,12,13</sup> The median age was 11 years (range, 27 days-18 years). Fifty-three patients (58%) were male, and 6 (7%) had underlying diseases (Table 1). No children had immunodeficiency. The most common source of infection was household contact (57 patients [63%]), fol-

Table 1. Demographics of Children With Coronavirus Disease 2019

Characteristic	No. (%) <sup>a</sup>
Total No.	91
Sex	
Male	53 (58)
Female	38 (42)
Age, y	
Median (range)	11 (0.07-18)
<1	6 (7)
1-5	13 (14)
6-10	23 (25)
11-15	31 (34)
16-18	18 (20)
Underlying disease <sup>b</sup>	
None	85 (93)
Asthma	3 (3)
Epilepsy	3 (3)
Exposure route	
Household	57 (63)
Imported	15 (17)
Cluster-associated	11 (12)
Other contact <sup>c</sup>	4 (4)
Unknown	4 (4)

<sup>a</sup> Percentages may not sum to 100% because of rounding.

<sup>b</sup> No children had immunodeficiency.

<sup>c</sup> Contacts with a kindergarten teacher or care helper at a rehabilitation center or close contacts with another individual with a confirmed case without a social relationship.

lowed by importation (15 [17%]), cluster-associated transmission (11 [12%]), other contacts (4 [4%]), and unknown sources (4 [4%]). Household contacts accounted for most cases from February 14 to March 18, 2020, while thereafter most cases were imported (Figure 1).

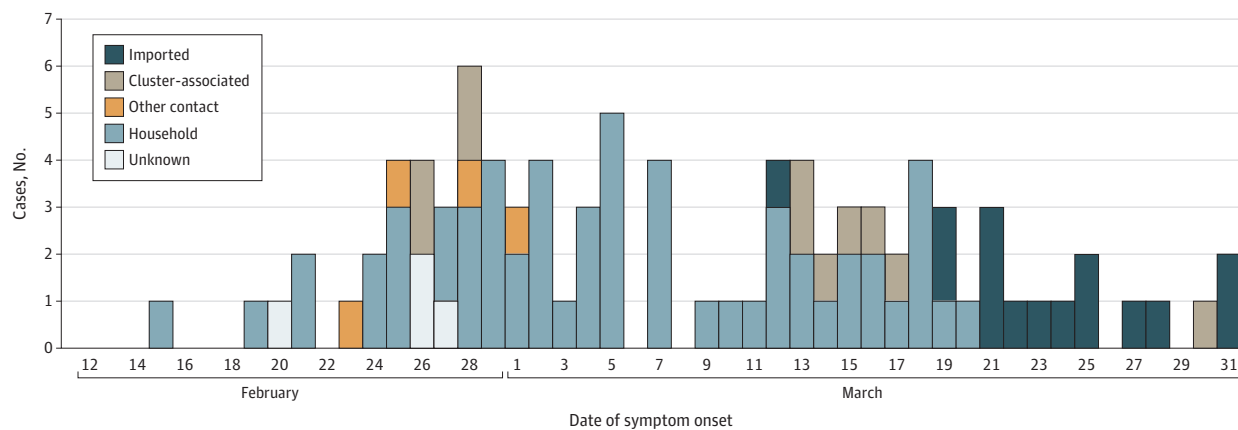
### Clinical Symptoms

Among 91 children with COVID-19, 20 (22%) remained asymptomatic throughout the monitoring period (Table 2). Patients who were symptomatic developed a wide range of symptoms. Fever (temperature,  $\geq 38.0$  °C) and mild fever (temperature, 37.5- $<38.0$  °C) developed in 27 patients (30%) and 35 patients (39%), respectively. Fifty-four children (60%) had respiratory symptoms, including cough, sputum, and rhinorrhea, whereas 16 (18%) presented with gastrointestinal symptoms, such as diarrhea and abdominal pain. There was 1 patient who only had abdominal pain and diarrhea, without fever or respiratory symptoms. Twelve children (16%) had loss of smell or taste. One patient only presented with loss of taste, without any other symptoms. Laboratory findings of the 91 patients were unremarkable (eTable in the Supplement).

### Symptom Duration With Regard to the Date of Diagnosis

All 91 children with COVID-19 were monitored for a mean (SD) of 21.9 (8) days (Figure 2). Among them, 71 (78.0%) were symptomatic for a median (range) of 11 (1-36) days. The proportion of children with symptoms remaining at follow-up was 61% (43

Figure 1. Epidemic Curve of Children With Coronavirus Disease 2019 in Korea From February 14 to March 31, 2020



Other contacts indicates close contact with a kindergarten teacher, care helper at a rehabilitation center, or with other individual with a confirmed case without a social relationship.

of 71 children) at 7 days, 38% (27 of 71) at 14 days, and 10% (7 of 71) at 21 days. Forty-seven children (66%) had symptoms for a median (range) of 3 (1-28) days prior to diagnosis. The median (range) duration of symptoms was 13 (3-36) days. Six children (9%) started to have symptoms from the time of diagnosis that lasted for a median (range) of 6.5 (1-12) days. There were 18 patients (25%) who had been asymptomatic at the time of diagnosis and developed symptoms a median (range) of 2.5 (1-25) days after the diagnosis of COVID-19. These children had a median (range) symptom duration of 3.5 (1-21) days. Twenty (22%) children with COVID-19 remained asymptomatic during a monitored period with a mean (SD) of 16 (8) days.

#### Duration of SARS-CoV-2 Detection in Children

Of 71 children with symptoms, 41 (58%) had URTIs, 22 (31%) had LRTIs, 3 (4.2%) did not undergo chest imaging because of mild illness, and the remaining 5 (7%) had other symptoms. The mean duration of virus RNA detection from symptom onset of the asymptomatic, URTI, and LRTI groups is shown in Figure 3A. Tests for SARS-CoV-2 were repeatedly performed in children at an interval with a median (range) of 3 (1-15) days to determine the cessation time of virus RNA detection. Overall, SARS-CoV-2 RNA was detected for a mean (SD) of 17.6 (6.7) days. The change of semiquantitative viral RNA load in 29 children with known RT-PCR cycle threshold values are shown in eFigure 2 in the Supplement. In asymptomatic cases, virus RNA was detected for a mean (SD) of 14.1 (7.7) days. Virus RNA in children with URTIs and LRTIs was detected for means (SDs) of 18.7 (5.8) days and 19.9 (5.6) days, respectively, and no significant difference was observed between the 2 groups ( $P = .54$ ). Figure 3B shows the proportion of children placed in health care isolation over time in each group. After 14 days from symptom onset (or diagnosis in asymptomatic cases), 12 children (60%) with asymptomatic cases remained in isolation, and 37 patients (90%) and 21 patients (96%) with URTIs and LRTIs remained in isolation, respectively. By day 21 from symptom onset, 4 asymptomatic cases (20%) were in isola-

tion, while 20 patients (49%) and 12 patients (55%) with URTIs and LRTIs remained in isolation, respectively.

#### Severity of COVID-19

Apart from asymptomatic cases, 46 patients (65%) had mild cases and 20 (28%) had moderate cases (Table 2). There were 2 patients (3%) with severe cases of COVID-19, who were only supplemented with oxygen via nasal prong, without requiring mechanical ventilation.

#### Treatment and Outcome

Twelve children (13%) with COVID-19 were treated with lopinavir-ritonavir, and 2 (2%) received hydroxychloroquine. Of those, 1 patient (1%) received both lopinavir-ritonavir and hydroxychloroquine (Table 2). The remaining 77 patients (85%) did not receive treatment for COVID-19. There was no difference in the mean (SD) duration of virus RNA detection between patients treated with lopinavir-ritonavir vs without lopinavir-ritonavir (17.9 [4.5] days vs 17.3 [8.3] days;  $P = .79$ ). No fatal case was observed.

## Discussion

In the earlier epidemic of COVID-19 in China and the current outbreak in other countries, diagnostic tests were concentrated on patients who were hospitalized and those at high risk of complications, thus missing the opportunity to diagnose children with COVID-19 who were mildly ill or asymptomatic.<sup>14</sup> However, the Korean health authorities and the local governments have responded to the COVID-19 pandemic by using massive testing of all contacts or suspected cases and strict individual-level case interventions (isolation, tracing, and quarantine).<sup>4</sup> Children with confirmed COVID-19 were all put in isolation units regardless of the presence of symptoms or disease severity. This strategy enabled us to fully characterize the diverse spectrum of COVID-19 in children. In this study,

**Table 2. Clinical Manifestations of Children With Coronavirus Disease 2019**

Clinical parameter	No./total No. (%) <sup>a</sup>
<b>Symptoms</b>	
None	20/91 (22)
Systemic	50/91 (55)
Fever (temperature, ≥38.0 °C)	27/91 (30)
Mild fever (temperature, 37.5- <38.0 °C)	35/91 (38)
Headache	12/77 (16)
Myalgia	7/77 (9)
Lethargy	5/89 (6)
Chills	3/90 (3)
Respiratory	54/90 (60)
Cough	37/90 (41)
Sputum	29/90 (32)
Rhinorrhea	24/90 (27)
Sore throat	22/77 (29)
Nasal stuffiness or congestion	8/90 (9)
Chest discomfort or pain	4/77 (5)
Dyspnea	1/77 (1)
Gastrointestinal	16/90 (18)
Diarrhea	11/90 (12)
Abdominal pain	6/77 (8)
Nausea or vomiting	6/90 (7)
Other	12/74 (16)
Loss of taste	8/74 (12)
Loss of smell	4/74 (5)
Eye pain	2/77 (3)
<b>Disease severity<sup>b</sup></b>	
Asymptomatic	20/91 (22)
Mild	46/91 (51)
Moderate	20/91 (22)
Severe	2/91 (2)
Unclassified	3/91 (3)
<b>Respiratory support</b>	
Oxygen supplement	2/91 (2)
Mechanical ventilation	0/91
Intensive care management	0/91
<b>Treatment<sup>c</sup></b>	
None	77/91 (85)
Lopinavir-ritonavir	13/91 (14)
Hydroxychloroquine	2/91 (2)
Mortality	0/91

<sup>a</sup> Numbers may not sum to total because of missing data, and percentages may not sum to 100% because of rounding.

<sup>b</sup> Mild cases were defined as the presence of any symptoms without abnormal chest imaging, moderate cases were defined as the presence of lower respiratory tract infection, and severe cases were defined as hypoxia with an oxygen saturation less than 95% or children with oxygen supplementation or mechanical ventilation. Cases are unclassified when chest imaging was not performed in patients with symptoms.

<sup>c</sup> One patient received both lopinavir-ritonavir and hydroxychloroquine.

most of the patients (79%), whose contact sources are known, had been monitored by the local health departments during their quarantine. The imported cases (17%) were evaluated

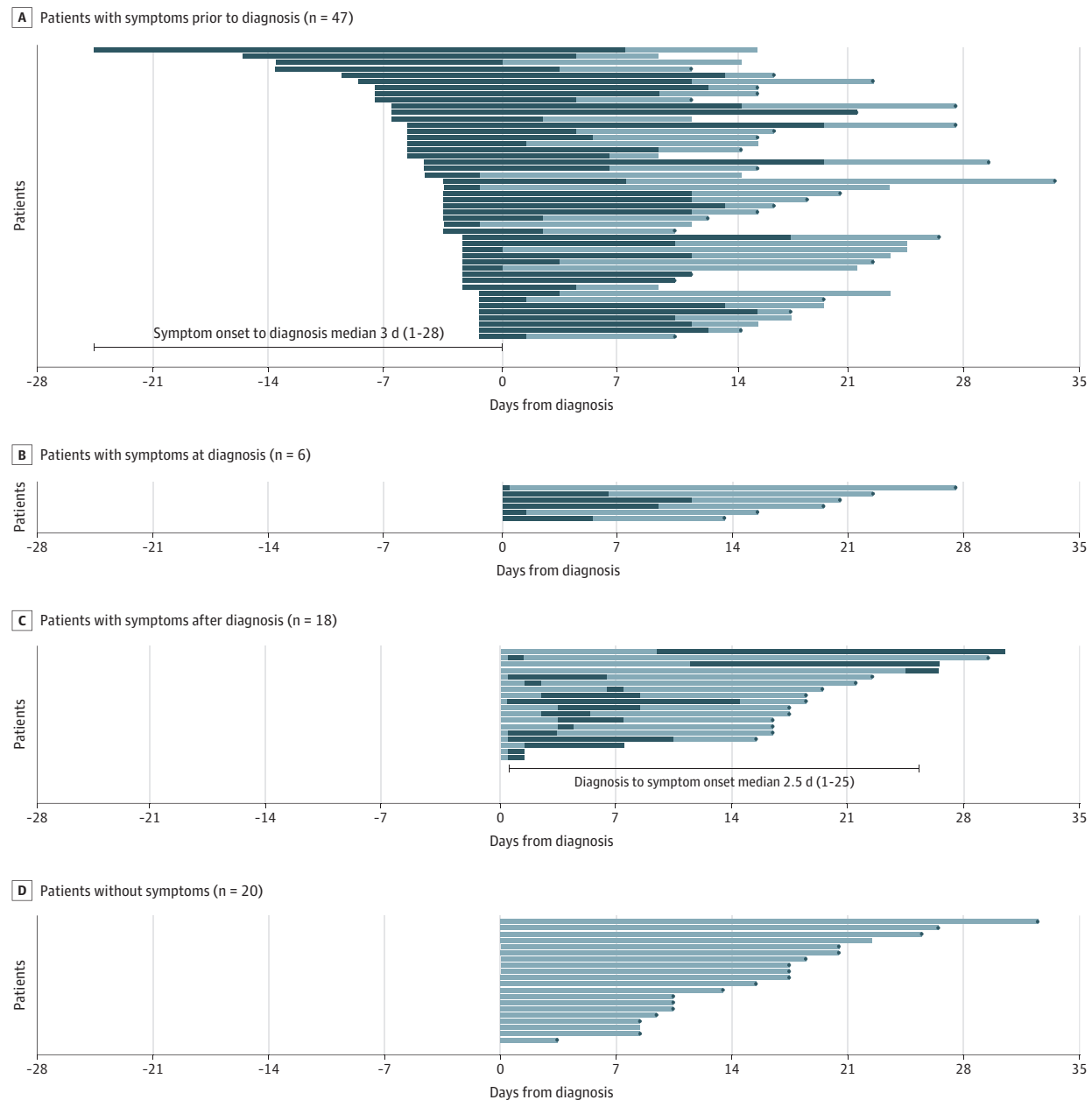
through reinforced screening at quarantine checkpoints and SARS-CoV-2 testing at the airports.

The findings of this study have several important implications. Children with COVID-19 in this study presented with a wide range of symptoms and signs, which were not specific enough for COVID-19 to prompt diagnostic testing or anticipate disease severity. Recent studies on pediatric COVID-19 from China and the US demonstrated that most children present with mild symptoms or are asymptomatic, without experiencing severe clinical courses.<sup>7,9,10</sup> Symptoms of URTI developed in 19% to 54% of the children whose cases were reported, while 16% to 28% were asymptomatic. A systematic review<sup>15</sup> of 18 studies with 1065 children showed that children of any age were reported to have mild respiratory symptoms, namely fever, dry cough, and fatigue, or were asymptomatic. Comparable with these reports, approximately 60% of the children in this study had respiratory symptoms and 22% were asymptomatic. This study additionally described the presence of other symptoms, including gastrointestinal and sensory symptoms. Of note, 11% of children had loss of taste while 5% experienced anosmia. A recent study conducted in Europe reported that olfactory and gustatory dysfunctions were present in a much higher proportion of 86% and 88% of the adult COVID-19 patients, respectively.<sup>16</sup> Whether these symptoms are highly associated with COVID-19 in children needs more research. In any case, symptoms in children in this study completely improved after a median of 11 days.

The major hurdle implicated in this study in diagnosing and treating children with COVID-19 is that a considerable number of children are asymptomatic, and even if symptoms are present, they are unrecognized and overlooked before COVID-19 is diagnosed. Approximately 52% of the children already had symptoms a median of 3 days prior to diagnosis. Given the very tight surveillance in Korea, it is notable that the symptoms of 70% of them, who had close contact with people with confirmed cases and were assumed to be in self-quarantine, were not recognized. Children in quarantine were tested for COVID-19 the day before they were released to confirm that they did not have the disease.<sup>11</sup> Meanwhile, 42% of the children were asymptomatic at the time of diagnosis, and 47% of them were presymptomatic and later developed symptoms after a median of 2.5 days. The rest remained asymptomatic throughout the whole course. These data suggest that 93% of the children with COVID-19 could have been missed were it not for Korea's intensive contact tracing and aggressive diagnostic testing. Cases of children with undocumented COVID-19 are worrisome because they could facilitate the rapid spread of SARS-CoV-2 in the community.<sup>17,18</sup>

Early detection is a key to contain the virus from spreading in the community. Unfortunately, the data from this analysis suggest that there is no other good alternative for early detection but to perform extensive virus testing. Considering that most children's symptoms are too mild to be noticed, other countries fighting the pandemic would benefit from performing large-scale testing, followed by immediate isolation strategy when enacting quarantine. However, this strategy may be practical only when intense epidemiological investigation with

Figure 2. Time Course From Time of Diagnosis to End of Isolation in Children With Coronavirus Disease 2019



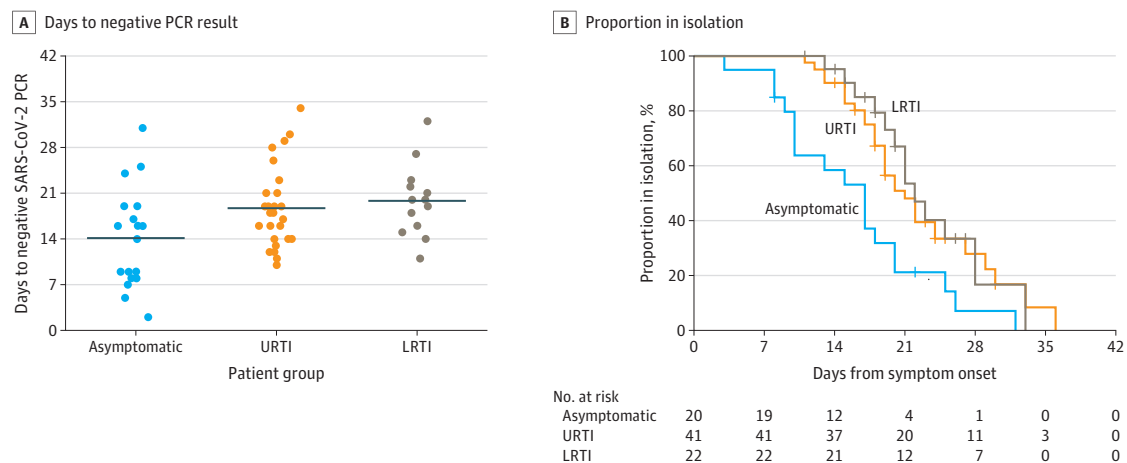
Time courses are presented according to the spectrum of symptom occurrence. Health care isolation was lifted when patients had improved symptoms and 2 consecutive negative polymerase chain reaction results from nasopharyngeal

and oropharyngeal swab specimens collected at least 24 hours apart. The dark colors indicate the symptomatic period, and the light colors indicate the asymptomatic period. The gray dots indicate the date of release from isolation.

contact tracing, high-quality tests with rapid turnaround time, and ample isolation facilities are available. Moreover, such heightened containment measures inevitably incur large expenses, as well as creating a shortage of health care workers and medical supplies.<sup>19,20</sup> Psychiatric problems brought out by putting children with no symptoms in an isolation unit should also be considered.<sup>21</sup> To solve this dilemma, national and international experts from various fields need to come together and work on effective countermeasures to combat the pandemic.

The uniqueness of this study is in its longitudinal analysis of virus RNA detection throughout the whole course of infection in children with COVID-19. No studies so far have thoroughly addressed on the duration of virus RNA detection and its difference by the presence of LRTIs in children, to our knowledge. In this study, SARS-CoV-2 RNA was detected for a mean of 17.6 days in children’s respiratory tracts. Children with URTIs and LRTIs had virus RNA detected for means of 18.7 days and 19.9 days, respectively, and the difference was not significant. It is alarming that the virus RNA can be detected even in chil-

Figure 3. Duration From Symptom Onset to Negative Test Results and End of Isolation



A, The mean duration from symptom onset to negative severe acute respiratory syndrome coronavirus 2 (SARS-CoV-2) polymerase chain reaction (PCR) results of the asymptomatic group and the groups with upper respiratory tract infection (URTIs) and lower respiratory tract infection (LRTIs). The line indicates the mean value. B, Kaplan-Meier curve for time to end of isolation. Health care

isolation was lifted when patients had improved symptoms and 2 consecutive negative polymerase chain reaction results from nasopharyngeal and oropharyngeal swab specimens collected at least 24 hours apart. For asymptomatic cases, the number of days from diagnosis, instead of days from symptom onset, was applied.

dren who are asymptomatic for a mean of 14.1 days. Studies in China and Singapore<sup>22-24</sup> have reported transmission of SARS-CoV-2 by patients who are asymptomatic and even evidence of presymptomatic transmission in adults. Infectiousness of the virus could peak 2 to 3 days before symptom starts, and transmission during the presymptomatic stage is estimated to make up 44% of secondary infections.<sup>25</sup> The detection of virus RNA in respiratory specimens in this study does not necessarily imply that viable virus is present. However, if proven infectious (because most of the children were asymptomatic, were presymptomatic, or had unrecognizable symptoms in this study), the transmission potential of SARS-CoV-2 in children and its effect on the community might be greater than expected.

### Limitations

The major limitation of this study is that we were not able to analyze the transmission potential of children with COVID-19. This is primarily because of Korea's strict quarantine and isolation strategies, which minimize exposures to individuals with vulnerabilities. Thus, we could not answer the question about infectivity and the infectious period in this cohort study. In addition, we did not compare the duration of virus RNA detection between asymptomatic and symptomatic

groups, because determining the start of RNA detection in children who were asymptomatic was not possible. Moreover, follow-up tests for SARS-CoV-2 RNA were not performed at uniform intervals in all patients; hence, the duration of SARS-CoV-2 RNA detection might not be exact. Although we did not include children connected to the outbreak of a specific religious group, the result of our study is considered to represent the entire picture of children with COVID-19 in Korea.

### Conclusions

In conclusion, the findings of this study suggest that suspecting and diagnosing COVID-19 in children based on their symptoms without epidemiologic information and virus testing is very challenging. Most of the children with COVID-19 have silent disease, but SARS-CoV-2 RNA can still be detected in the respiratory tract for a prolonged period. The potential role of children in transmitting disease in the community needs to be further elucidated, and strategies to contain COVID-19 should reflect its effects. Heightened surveillance using laboratory screening will allow detection in children with unrecognized SARS-CoV-2 infection.

### ARTICLE INFORMATION

**Accepted for Publication:** June 17, 2020.

**Published Online:** August 28, 2020.  
doi:10.1001/jamapediatrics.2020.3988

**Open Access:** This is an open access article distributed under the terms of the [CC-BY License](https://creativecommons.org/licenses/by/4.0/).  
© 2020 Han MS et al. *JAMA Pediatrics*.

**Author Affiliations:** Department of Pediatrics, Seoul Metropolitan Government-Seoul National University Boramae Medical Center, Seoul, Korea (Han); Department of Pediatrics, Seoul National

University College of Medicine, Seoul, Korea (E. H. Choi); Department of Pediatrics, Seoul Medical Center, Seoul, Korea (Chang); Department of Pediatrics, Hongseong Medical Center, Hongseong, Korea (Jin); Department of Pediatrics, Seongnam Citizens Medical Center, Seongnam, Korea (E. J. Lee); Department of Pediatrics, Gyeonggi Provincial Medical Center Ansung Hospital, Ansung, Korea (B. N. Kim); Department of Pediatrics, Seonam Hospital, Seoul, Korea (M. K. Kim); Department of Pediatrics, Gyeonggi Provincial Medical Center Icheon Hospital, Icheon,

Korea (Doo); Department of Pediatrics, Dankook University Hospital, Cheonan, Korea (Seo); Department of Pediatrics, Samsung Medical Center, Sungkyunkwan University School of Medicine, Seoul, Korea (Y.-J. Kim); Department of Pediatrics, Masan Medical Center, Changwon, Korea (Y. J. Kim); Department of Pediatrics, Chung-Ang University Hospital, Seoul, Korea (J. Y. Park); Department of Pediatrics, Busan Medical Center, Busan, Korea (Suh); Department of Pediatrics, Seoul National University Bundang Hospital, Seongnam, Korea (H. Lee); Department of Pediatrics, Chungnam

National University Hospital, Daejeon, Korea (E. Y. Cho); Department of Pediatrics, Inha University Hospital, Incheon, Korea (D. H. Kim); Department of Pediatrics, Myongji Hospital, Goyang, Korea (J. M. Kim); Department of Pediatrics, Pusan National University Hospital, Busan, Korea (H. Y. Kim); Department of Pediatrics, Pusan National University Children's Hospital, Yongsan, Korea (S. E. Park, K. J. Jo); Department of Pediatrics, Chungbuk National University Hospital, Cheongju, Korea (J. K. Lee); Department of Pediatrics, Jeonbuk National University Medical School, Jeonju, Korea (D. S. Jo); Department of Pediatrics, Dongguk University College of Medicine, Gyeongju, Korea (S.-M. Cho); Department of Pediatrics, Jeju National University Hospital, Jeju, Korea (J. H. Choi); Department of Social and Preventive Medicine, Hallym University College of Medicine, Chuncheon, Korea (Choe); Department of Pediatrics, Incheon St Mary's Hospital, The Catholic University of Korea, Incheon, Korea (K. H. Kim); Department of Pediatrics, St Vincent's Hospital, The Catholic University of Korea, Suwon, Korea (J.-H. Kim).

**Author Contributions:** Drs Han and Choi had full access to all of the data in the study and take responsibility for the integrity of the data and the accuracy of the data analysis.

**Concept and design:** Han, E. Choi, Jong-Hyun Kim. **Acquisition, analysis, or interpretation of data:** All authors.

**Drafting of the manuscript:** Han, E. Choi, S. Park, Choe.

**Critical revision of the manuscript for important intellectual content:** Han, E. Choi, Chang, Jin, E. Lee, B. Kim, M. Kim, Doo, Seo, Yae-Jean Kim, Yeo Jin Kim, J. Park, Suh, H. Lee, E. Cho, D. Kim, Jong Min Kim, H. Kim, J. Lee, D. Jo, S. Cho, J. Choi, K. Jo, Choe, K. Kim, Jong-Hyun Kim.

**Statistical analysis:** Han, Choe.

**Administrative, technical, or material support:** Han, E. Choi, Chang, Jin, E. Lee, B. Kim, M. Kim, Doo, Seo, Yae-Jean Kim, Yeo Jin Kim, J. Park, Suh, H. Lee, E. Cho, D. Kim, Jong Min Kim, H. Kim, S. Park, J. Lee, D. Jo, S. Cho, J. Choi, K. Jo, K. Kim, Jong-Hyun Kim. **Supervision:** E. Choi, Jong-Hyun Kim.

**Conflict of Interest Disclosures:** None reported.

**Additional Contributions:** We thank all the medical staff at hospitals, city and provincial medical centers, and community facilities for their dedication to provide care for COVID-19; staff at the local health departments for their dedication; members of the Korean Society of Pediatric Infectious Diseases for their valuable advice on the management of COVID-19 cases; and staff at the Korea Centers for Disease Control and Prevention for their tireless efforts to combat this public health emergency.

## REFERENCES

1. World Health Organization. Coronavirus disease (COVID-19): situation report-91. Published April 20, 2020. Accessed April 22, 2020. [https://www.who.int/docs/default-source/coronavirus/situation-](https://www.who.int/docs/default-source/coronavirus/situation-reports/20200420-sitrep-91-covid-19.pdf?sfvrsn=fcf0670b_4)

[reports/20200420-sitrep-91-covid-19.pdf?sfvrsn=fcf0670b\\_4](https://www.who.int/docs/default-source/coronavirus/situation-reports/20200420-sitrep-91-covid-19.pdf?sfvrsn=fcf0670b_4)

2. Kim JY, Choe PG, Oh Y, et al. The first case of 2019 novel coronavirus pneumonia imported into Korea from Wuhan, China: implication for infection prevention and control measures. *J Korean Med Sci*. 2020;35(5):e61. doi:10.3346/jkms.2020.35.e61

3. Korean Society of Infectious Diseases; Korean Society of Pediatric Infectious Diseases; Korean Society of Epidemiology; Korean Society for Antimicrobial Therapy; Korean Society for Healthcare-associated Infection Control and Prevention; Korea Centers for Disease Control and Prevention. Report on the epidemiological features of coronavirus disease 2019 (COVID-19) outbreak in the Republic of Korea from January 19 to March 2, 2020. *J Korean Med Sci*. 2020;35(10):e112. doi:10.3346/jkms.2020.35.e112

4. Korea Centers for Disease Control & Prevention. COVID-19 response: Korean government's response system (as of February 25, 2020). Published February 25, 2020. Accessed April 22, 2020. [http://ncov.mohw.go.kr/en/baroView.do?brdId=11&brdGubun=111&dataGubun=&ncvContSeq=&contSeq=&board\\_id=&gubun=](http://ncov.mohw.go.kr/en/baroView.do?brdId=11&brdGubun=111&dataGubun=&ncvContSeq=&contSeq=&board_id=&gubun=)

5. Korea Centers for Disease Control & Prevention. The updates of COVID-19 in the Republic of Korea. Accessed April 20, 2020. <https://www.cdc.go.kr/board/board.es?mid=a20501000000&bid=0015>

6. Park JY, Han MS, Park KU, Kim JY, Choi EH. First pediatric case of coronavirus disease 2019 in Korea. *J Korean Med Sci*. 2020;35(11):e124. doi:10.3346/jkms.2020.35.e124

7. Lu X, Zhang L, Du H, et al; Chinese Pediatric Novel Coronavirus Study Team. SARS-CoV-2 infection in children. *N Engl J Med*. 2020;382(17):1663-1665. doi:10.1056/NEJM2005073

8. Dong Y, Mo X, Hu Y, et al. Epidemiology of COVID-19 among children in China. *Pediatrics*. 2020;145(6):e20200702. doi:10.1542/peds.2020-0702

9. CDC COVID-19 Response Team. Severe outcomes among patients with coronavirus disease 2019 (COVID-19)—United States, February 12–March 16, 2020. *MMWR Morb Mortal Wkly Rep*. 2020;69(12):343-346. doi:10.15585/mmwr.mm6912e2

10. Qiu H, Wu J, Hong L, Luo Y, Song Q, Chen D. Clinical and epidemiological features of 36 children with coronavirus disease 2019 (COVID-19) in Zhejiang, China: an observational cohort study. *Lancet Infect Dis*. 2020;20(6):689-696. doi:10.1016/S1473-3099(20)30198-5

11. Korea Centers for Disease Control & Prevention. COVID-19 guideline. Accessed April 22, 2020. [https://is.cdc.go.kr/upload\\_comm/syview/doc.html?fn=158607093474500.pdf&rs=/upload\\_comm/docu/0019/](https://is.cdc.go.kr/upload_comm/syview/doc.html?fn=158607093474500.pdf&rs=/upload_comm/docu/0019/)

12. Yoo SY, Lee Y, Lee GH, Kim DH. Reactivation of SARS-CoV-2 after recovery. *Pediatr Int*. 2020;62(7):879-881. doi:10.1111/ped.14312

13. Han MS, Seong MW, Kim N, et al. Viral RNA load in mildly symptomatic and asymptomatic children

with COVID-19, Seoul. *Emerg Infect Dis*. 2020;26(10). doi:10.3201/eid2610.202449

14. Centers for Disease Control and Prevention. Overview of testing for SARS-CoV-2. Accessed April 20, 2020. <https://www.cdc.gov/coronavirus/2019-nCoV/hcp/clinical-criteria.html>

15. Castagnoli R, Votto M, Licari A, et al. Severe acute respiratory syndrome coronavirus 2 (SARS-CoV-2) infection in children and adolescents: a systematic review. *JAMA Pediatr*. 2020. doi:10.1001/jamapediatrics.2020.1467

16. Lechien JR, Chiesa-Estomba CM, De Siaty DR, et al. Olfactory and gustatory dysfunctions as a clinical presentation of mild-to-moderate forms of the coronavirus disease (COVID-19): a multicenter European study. *Eur Arch Otorhinolaryngol*. 2020;277(8):2251-2261. doi:10.1007/s00405-020-05965-1

17. Li R, Pei S, Chen B, et al. Substantial undocumented infection facilitates the rapid dissemination of novel coronavirus (SARS-CoV-2). *Science*. 2020;368(6490):489-493. doi:10.1126/science.abb3221

18. Rothe C, Schunk M, Sothmann P, et al. Transmission of 2019-nCoV infection from an asymptomatic contact in Germany. *N Engl J Med*. 2020;382(10):970-971. doi:10.1056/NEJM2001468

19. Wang X, Zhang X, He J. Challenges to the system of reserve medical supplies for public health emergencies: reflections on the outbreak of the severe acute respiratory syndrome coronavirus 2 (SARS-CoV-2) epidemic in China. *Biosci Trends*. 2020;14(1):3-8. doi:10.5582/bst.2020.01043

20. Carenzo L, Costantini E, Greco M, et al. Hospital surge capacity in a tertiary emergency referral centre during the COVID-19 outbreak in Italy. *Anaesthesia*. 2020;75(7):928-934. doi:10.1111/anae.15072

21. Xiang YT, Yang Y, Li W, et al. Timely mental health care for the 2019 novel coronavirus outbreak is urgently needed. *Lancet Psychiatry*. 2020;7(3):228-229. doi:10.1016/S2215-0366(20)30046-8

22. Bai Y, Yao L, Wei T, et al. Presumed asymptomatic carrier transmission of COVID-19. *JAMA*. 2020. doi:10.1001/jama.2020.2565

23. Li C, Ji F, Wang L, et al. Asymptomatic and human-to-human transmission of SARS-CoV-2 in a 2-family cluster, Xuzhou, China. *Emerg Infect Dis*. 2020;26(7):1626-1628. doi:10.3201/eid2607.200718

24. Wei WE, Li Z, Chiew CJ, Yong SE, Toh MP, Lee VJ. Presymptomatic transmission of SARS-CoV-2—Singapore, January 23–March 16, 2020. *MMWR Morb Mortal Wkly Rep*. 2020;69(14):411-415. doi:10.15585/mmwr.mm6914e1

25. He X, Lau EHY, Wu P, et al. Temporal dynamics in viral shedding and transmissibility of COVID-19. *Nat Med*. 2020;26(5):672-675. doi:10.1038/s41591-020-0869-5